

# PKL SERIES

## UTE LIFT

Perfection in every detail

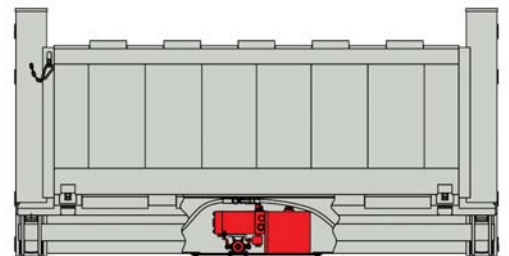


This superior and cost effective tail lift is specifically designed for one-tonne vehicles. It is extremely light in weight (120kg) and is installed directly onto the tray. There is no need to alter the lights or number plate and the tow bar is not affected by the installation.

All models are completely assembled, adjusted and tested prior to delivery.



- Easy & quick installation
- Long life - low maintenance



**Gough Transport  
Solutions**

'QUALITY HYDRAULIC & TRANSPORT EQUIPMENT'



Model	Mechanism	Platform	Max. height unload	Capacity kg	Load centre mm	Platform Size W x L mm	Weight kg
PKL-300.110AL/AL	Aluminium	Aluminium	1100	300	500	1430 x 1137	120
PKL-400.093AL/AL	Aluminium	Aluminium	930	400	500	1430 x 1137	116

**Standard Inclusions**

Two cables for direct +/- for a direct connection to the battery



Hand control



Platform security

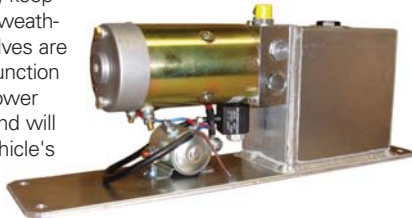


All-Aluminium Tail Lift

# Why AHT is the number 1 sold tail lift in Australia

**Powerpack**

The PKL tail lift is controlled by a compact powerpack which is housed in the unit's frame, keeping it completely safe and weatherproof. The motor and valves are perfectly tuned to the lift function and the vehicle battery. Power consumption is very low and will not adversely affect the vehicle's battery.



**Lifting Mechanism**

The left and right lifting arms are securely connected with a torsion bar to ensure the stable operation of the platform even with an uncentered load.



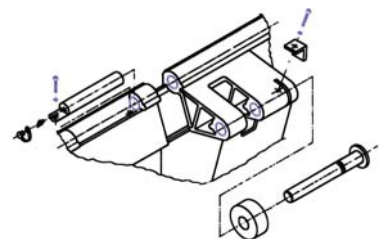
**Platform Lock**

The platform is automatically locked when the operator closes the platform, and has a pin type lock to keep it safe while travelling.



**Mounting Pins**

The pins are mounted in DU-bushings. The pins on all-aluminum platforms are mounted in ceramic-coated bearings. Since ceramic is not an electrical conductive material it avoids corrosion. The pins can be easily removed after years of hard use. All pins are secured with a bracket and the screws are made of stainless steel.



**Platform Hinge**

The continuous aluminum hinge is guided by a stainless steel rod that has a grease fitting at every pivot point.



**Safety First**

All cylinders are equipped with mechanical hose-burst valves which are operative during lifting and lowering of the platform. The platform will stop immediately if a hose bursts, protecting the operator and product.



**Gough Transport Solutions**

'QUALITY HYDRAULIC & TRANSPORT EQUIPMENT'

